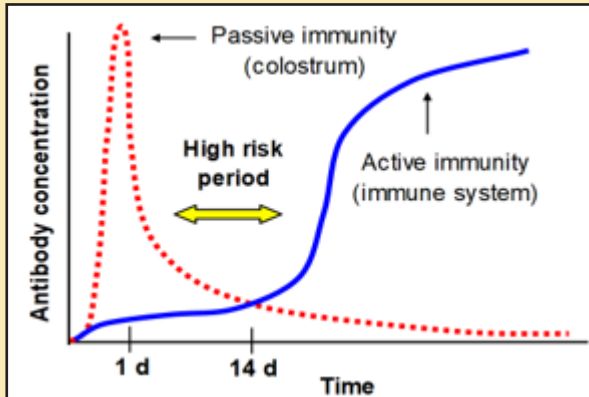


The goal of calf rearing is to produce a healthy mature animal capable of achieving maximum genetic and productive potential. To do that we must:

- *Keep calf mortality low.*
- *Maintain good calf growth.*
- *Maintain good calf health.*



HOWEVER, the gap between passive immunity provided by colostrum and the development of the calf's own immunity creates a period of great risk between 7 - 14 days of age!



First 14 is part of a full line of Form-A-Calf specialty products for daily calf wellness and critical care.

DAILY WELLNESS:

Stealth 5 WD

25558-179 - 450 g
25558-175 - 4.5 Kg

For the prevention of scours caused by bacterial infection of the gastrointestinal tract and stimulation of healthy lower intestinal tract. To be fed through risk period or entire time on liquid feed. Water dispersible formula can be fed through whole milk or milk replacer.

Probiotic Daily

20182-174 - 500 g
20182-175 - 5 Kg

A water-soluble prebiotic and probiotic for promotion of a strong healthy GIT and immune system. To be fed as recovery from scours or entire time on liquid feed for improved performance.

CRITICAL CARE:

Calf Renew

21975-179 - 5 gram capsule - 36 per jar

A prebiotic, probiotic, and essential oil bolus to cleanse the gastrointestinal tract of pathogens that cause scours. Give at the first sign of scours.

Probiotic Bolus

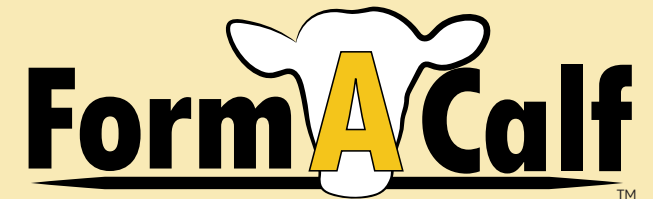
20190-173 - 6 gram capsule - 36 per jar

A probiotic bolus to reintroduce good bacteria that are lost during scours.

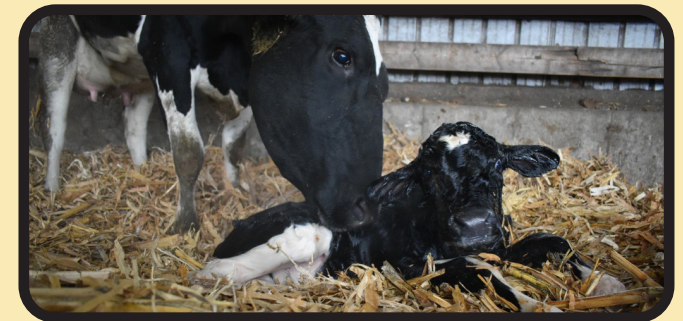
Electrolyte

20180-173 - 3.6 lb
20180-175 - 25 lb

Supplemental fluids, electrolytes, buffers, and energy to support the scouring calf.



First 14



A nutraceutical to modulate immunity and promote early gut cell development of young cattle.



www.formafeed.com | 800.422.3649

Rev 022723



FormA Calf

First 14

Scours is a multi-faceted disease of young calves that negatively impact profitability of the dairy through reduced calf performance, treatment cost, death losses and additional labor.

Form-A-Calf First 14 has been developed in response to the vast demand to help prevent scours and the increased pressure to reduce the usage of medication on neonatal calves.

FEATURES

- Medium chain fatty acids
- Yeast extract and cell wall components
- Immunonutrients from first milking colostrum
- Antioxidants
- Essential amino acids
- Chelated organic zinc

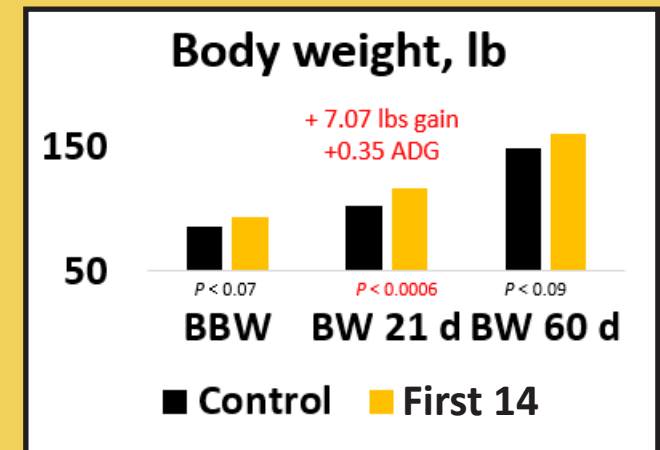
10 g per head per day mixed into whole milk or milk replacer for at least the first 14 days of life.

70036-175 22 lb bag provides 1,000 doses
70036-174 4.4 lb bag provides 200 doses



BENEFITS

- Interferes with the growth of potential scours inducing pathogens
- Modulates gut immunity and microflora
- Increases nutrient absorption for higher preweaning average daily gain
- Stimulates early intestinal cell growth
- Protects cells from oxidative damage



Field demonstration - September 2022

5,000 cow dairy in central MN

Comparing calves fed First 14 to control calves demonstrated statistically significant:

- *Improvement in BW gain*
- *Improvement in fecal scores*
- *Reduction in scours events*

